

# CREATOR OF MEMORIES

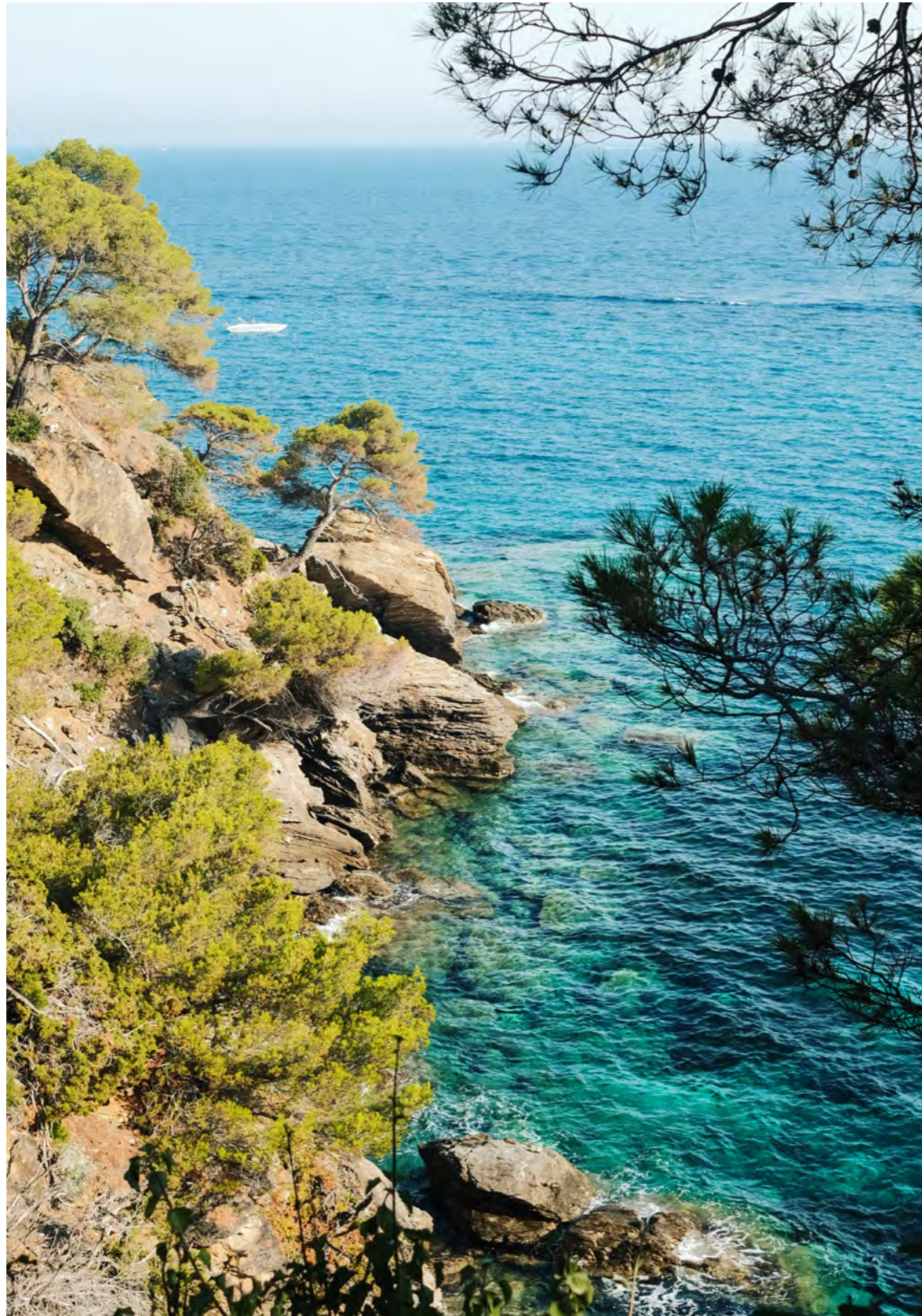
LES MÛRES



## YOUR HOLIDAY IN THE HEART OF THE GULF OF SAINT-TROPEZ

By the sea and nestled among the century-old pines of Grimaud, our campsite offers an exceptional setting with direct access to the beach and breathtaking views of the Gulf of St-Tropez.

With its Mediterranean vegetation, fine sandy beach, mobile homes, and pitches located either directly on the sand by the beach or in a more natural setting on the vineyard side, our Côte d'Azur campsite has everything to charm you.



## IN THE HEART OF AN EXCEPTIONAL REGION

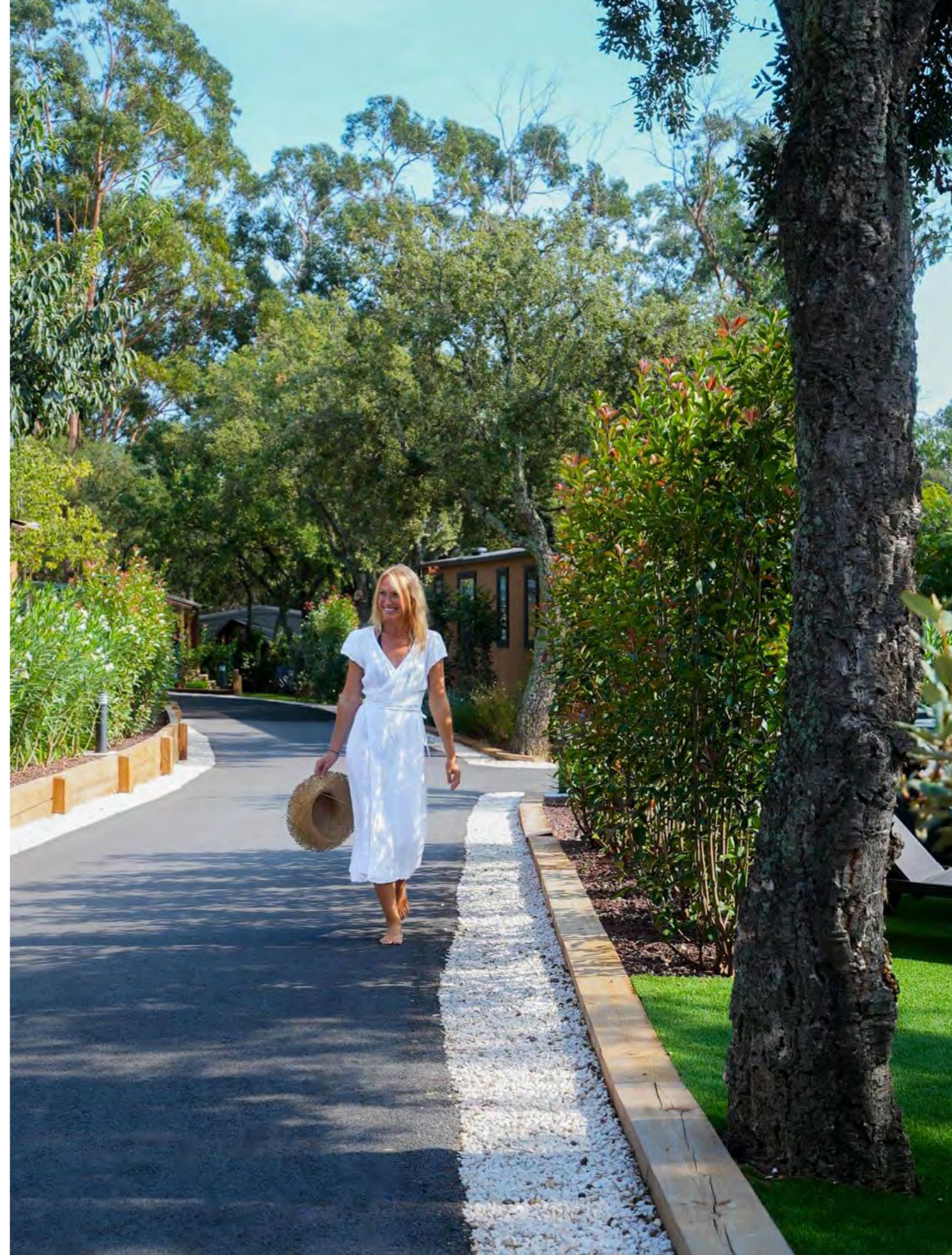
Make the most of your stay at our campsite to explore the surroundings and the many attractions that make the Côte d'Azur an ideal destination. Don't miss the chance to visit Saint-Tropez, Monaco, Port-Grimaud... evocative names and dream destinations! Our concierge service will be delighted to arrange excursions and organise activities for you to discover.

# STAYING IN A MOBILE HOME

Installed directly on the sand **ON THE BEACH**, facing the village of Saint-Tropez, or **ON THE VINEYARD SIDE**, just a few steps from the shore, we offer a wide range of rental accommodations to suit all preferences and tastes.

All our mobile homes are designed to provide optimal comfort and can accommodate between 2 and 6 people, depending on the selected model. Our accommodations are fully equipped with everything you need for a pleasant stay: TV, air conditioning, WIFI, a fully equipped kitchen, as well as duvets and pillows for restful nights.

Outside, you'll enjoy a covered terrace with a table and chairs, perfect for dining in the shade or simply relaxing. Depending on the chosen category, you will also benefit from end-of-stay cleaning, bed linen and towels, as well as sun loungers and a plancha grill. Staying with us guarantees an unforgettable vacation, where every detail has been carefully considered for your comfort and well-being.



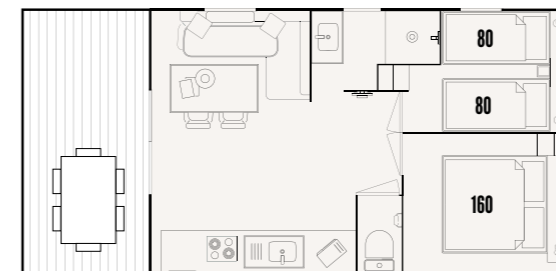
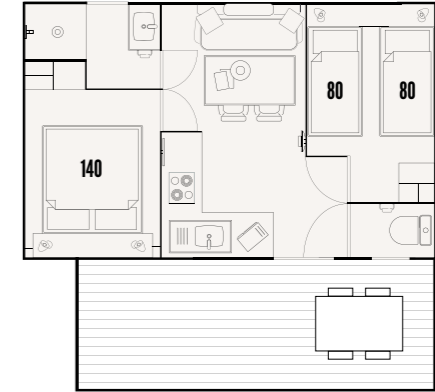
# BEACH SIDE



## COMFORT PLUS

### 1<sup>st</sup> ROW | 4 PERSONS

CAPACITY : 4 persons  
ACCOMMODATION : 2 bedrooms  
INTERIOR SURFACE : 22m<sup>2</sup>  
LOCATION : beach side  
ADVANTAGE : 1<sup>st</sup> line facing the sea

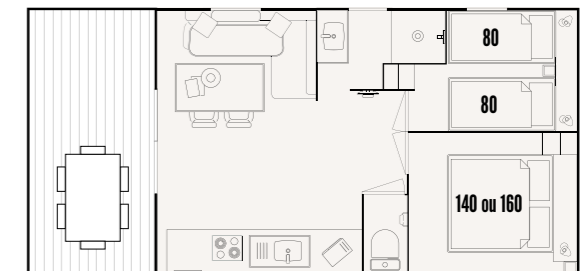


### 1<sup>st</sup> ROW | 4-6 PERSONS

CAPACITY : 4-6 persons (4 adults | 2 children)  
ACCOMMODATION : 2 bedrooms + sofa bed  
INTERIOR SURFACE : 25m<sup>2</sup>  
LOCATION : beach side  
ADVANTAGE : 1<sup>st</sup> line facing the sea

### INTERMEDIATE ROW | 4-6 PERSONS

CAPACITY : 4-6 persons (4 adults | 2 children)  
ACCOMMODATION : 2 bedrooms + sofa bed  
INTERIOR SURFACE : 25m<sup>2</sup>  
LOCATION : beach side  
ADVANTAGE : a few meters from the beach

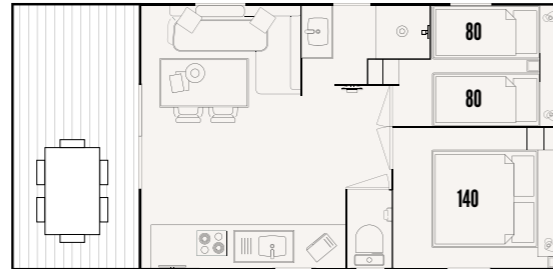


# PREMIUM

---

## 1<sup>st</sup> ROW | 4-6 PERSONS

**CAPACITY** : 4-6 persons (4 adults | 2 children)  
**ACCOMMODATION** : 2 bedrooms + sofa bed  
**INTERIOR SURFACE** : 25m<sup>2</sup>  
**LOCATION** : beach side  
**ADVANTAGE** : outdoor area with deckchairs



# PRESTIGE

---



## 1<sup>st</sup> ROW | 4 PERSONS

**CAPACITY** : 4 persons  
**ACCOMMODATION** : 2 bedrooms  
**INTERIOR SURFACE** : 25m<sup>2</sup>  
**LOCATION** : beach side  
**ADVANTAGE** : private outdoor space with deckchairs, large terrace and plancha

## 2<sup>nd</sup> ROW | 4 PERSONS

**CAPACITY** : 4 persons  
**ACCOMMODATION** : 2 bedrooms  
**INTERIOR SURFACE** : 25m<sup>2</sup>  
**LOCATION** : beach side  
**ADVANTAGE** : private outdoor space with deckchairs, large terrace and plancha



# VINEYARD SIDE

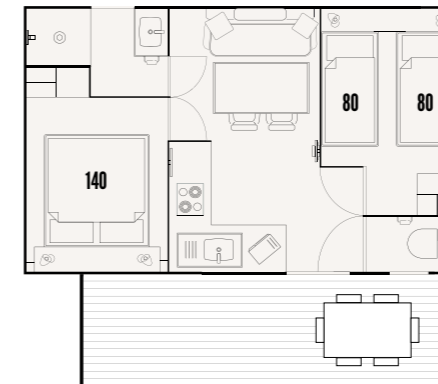
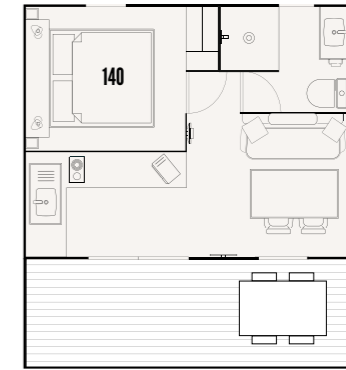


Picture above : Premium Plus mobile home

## COMFORT PLUS

### 2 PERSONS

CAPACITY : 2 persons  
ACCOMMODATION : 1 bedroom  
INTERIOR SURFACE : 18m<sup>2</sup>  
LOCATION : vineyard side  
ADVANTAGE : Our most affordable range



### 4 PERSONS

CAPACITY : 4 persons  
ACCOMMODATION : 2 bedrooms  
INTERIOR SURFACE : 22m<sup>2</sup>  
LOCATION : vineyard side  
ADVANTAGE : Our most affordable range

### 6 PERSONS

CAPACITY : 6 persons  
ACCOMMODATION : 3 bedrooms  
INTERIOR SURFACE : 30m<sup>2</sup>  
LOCATION : vineyard side  
ADVANTAGE : Our most affordable range

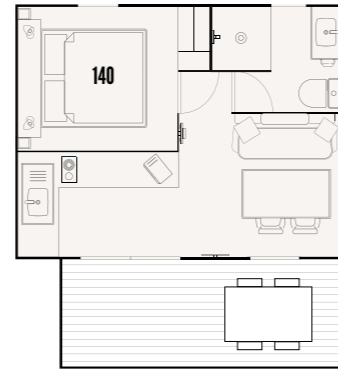


# PREMIUM

---

## 2 PERSONS

CAPACITY : 2 persons  
ACCOMMODATION : 1 bedroom  
INTERIOR SURFACE : 18m  
LOCATION : vineyard side  
ADVANTAGE : private garden with deckchairs

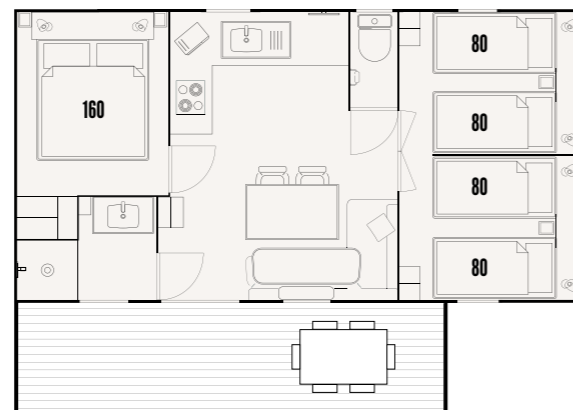


## 4 PERSONS

CAPACITY : 4 persons  
ACCOMMODATION : 2 bedrooms  
INTERIOR SURFACE : 28m<sup>2</sup>  
LOCATION : vineyard side  
ADVANTAGE : private garden with deckchairs

## 6 PERSONS

CAPACITY : 6 persons  
ACCOMMODATION : 3 bedrooms  
INTERIOR SURFACE : 30m<sup>2</sup>  
LOCATION : vineyard side  
ADVANTAGE : private garden with deckchairs

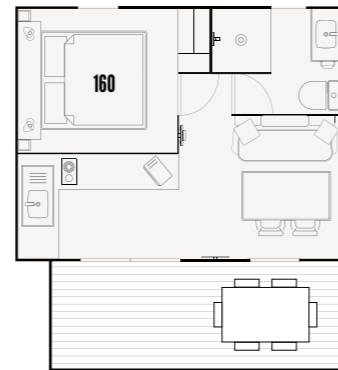




# PRIVILÈGE

## 2 PERSONS

CAPACITY : 2 persons  
ACCOMMODATION : 1 bedroom  
INTERIOR SURFACE : 18m  
LOCATION : vineyard side  
ADVANTAGE : small private outdoor area,  
dishwasher



## 4 PERSONS | 24m<sup>2</sup>

CAPACITY : 4 persons  
ACCOMMODATION : 2 bedrooms  
INTERIOR SURFACE : 24m<sup>2</sup>  
LOCATION : vineyard side  
ADVANTAGE : small private outdoor area,  
dishwasher

## 4 PERSONS | 29m<sup>2</sup>

CAPACITY : 4 persons  
ACCOMMODATION : 2 bedrooms  
INTERIOR SURFACE : 29m<sup>2</sup>  
LOCATION : vineyard side  
ADVANTAGE : small private outdoor area,  
dishwasher



## 6 PERSONS

CAPACITY : 6 persons  
ACCOMMODATION : 3 bedrooms  
INTERIOR SURFACE : 36,5m<sup>2</sup>  
LOCATION : vineyard side  
ADVANTAGE : small private outdoor area,  
dishwasher





## PREMIUM PLUS

### 2 PERSONS

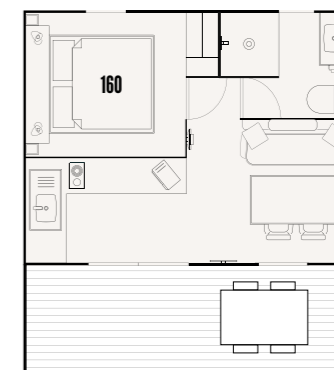
CAPACITY : 2 persons

ACCOMMODATION : 1 bedroom

INTERIOR SURFACE : 18m

LOCATION : vineyard side

ADVANTAGE : private garden with deckchairs, dishwasher



### 4 PERSONS

CAPACITY : 4 persons

ACCOMMODATION : 2 bedrooms

INTERIOR SURFACE : 30m<sup>2</sup>

LOCATION : vineyard side

ADVANTAGE : private garden with deckchairs, dishwasher

### 6 PERSONS

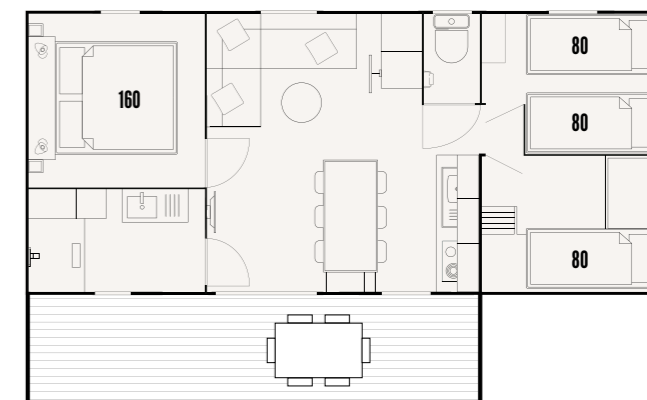
CAPACITY : 6 persons

ACCOMMODATION : 3 bedrooms

INTERIOR SURFACE : 33m<sup>2</sup>

LOCATION : vineyard side

ADVANTAGE : private garden with deckchairs, dishwasher



# PRESTIGE

## 2 PERSONS

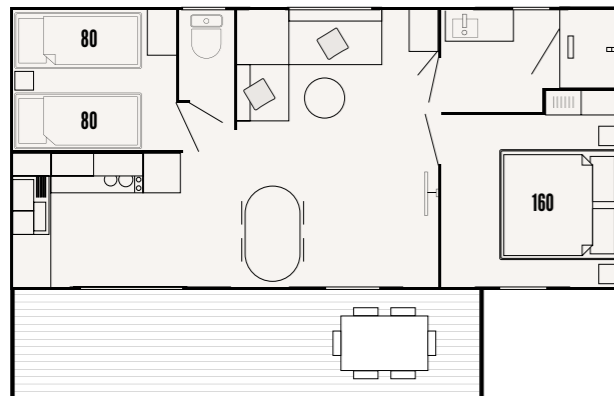
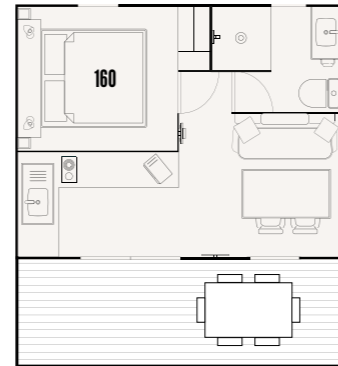
CAPACITY : 2 persons

ACCOMMODATION : 1 bedroom

INTERIOR SURFACE : 18m<sup>2</sup>

LOCATION : vineyard side

ADVANTAGE : private garden with deckchairs,  
plancha, dishwasher



## 4 PERSONS

CAPACITY : 4 persons

ACCOMMODATION : 2 bedrooms

INTERIOR SURFACE : 32m<sup>2</sup>

LOCATION : vineyard side

ADVANTAGE : private garden  
with deckchairs, plancha, dishwasher

## 6 PERSONS

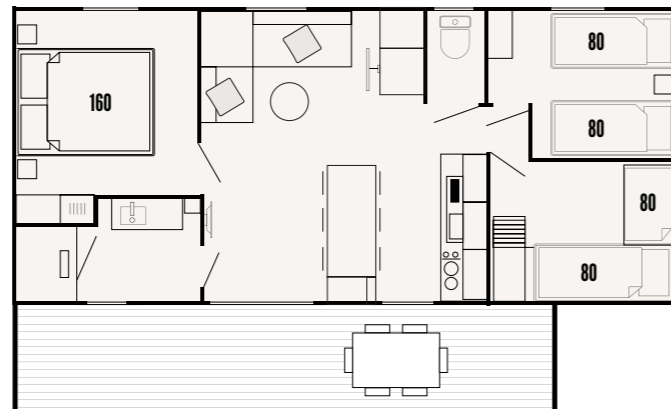
CAPACITY : 6 persons

ACCOMMODATION : 3 bedrooms

INTERIOR SURFACE : 33m<sup>2</sup>

LOCATION : vineyard side

ADVANTAGE : private garden  
with deckchairs, plancha, dishwasher

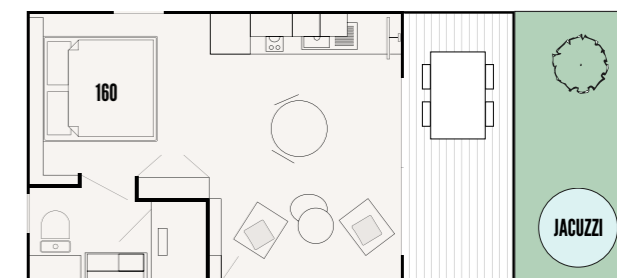




## PRESTIGE JACUZZI

### 2 PERSONS

**CAPACITY :** 2 persons  
**ACCOMMODATION :** 1 bedroom  
**INTERIOR SURFACE :** 21m<sup>2</sup>  
**LOCATION :** vineyard side  
**ADVANTAGE :** private garden with deckchairs and jacuzzi, plancha, dishwasher



### 4 PERSONS

**CAPACITY :** 4 persons  
**ACCOMMODATION :** 2 bedrooms  
**INTERIOR SURFACE :** 33m<sup>2</sup>  
**LOCATION :** vineyard side  
**ADVANTAGE :** private garden with deckchairs and jacuzzi, plancha, dishwasher

### 6 PERSONS

**CAPACITY :** 6 persons  
**ACCOMMODATION :** 3 bedrooms  
**INTERIOR SURFACE :** 33m<sup>2</sup>  
**LOCATION :** vineyard side  
**ADVANTAGE :** private garden with deckchairs and jacuzzi, plancha, dishwasher

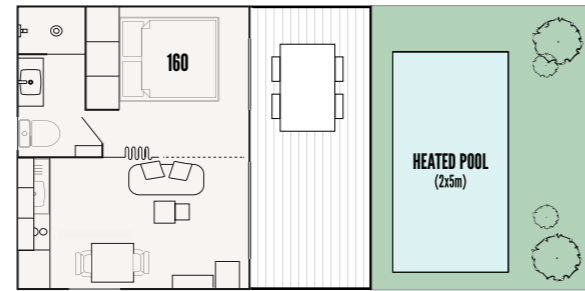




# PRESTIGE POOL

## 2 PERSONS

**CAPACITY :** 2 persons  
**ACCOMMODATION :** 1 bedroom  
**INTERIOR SURFACE :** 21m<sup>2</sup>  
**LOCATION :** vineyard side  
**ADVANTAGE :** Private fenced garden with heated swimming pool, deckchairs, plancha and dishwasher

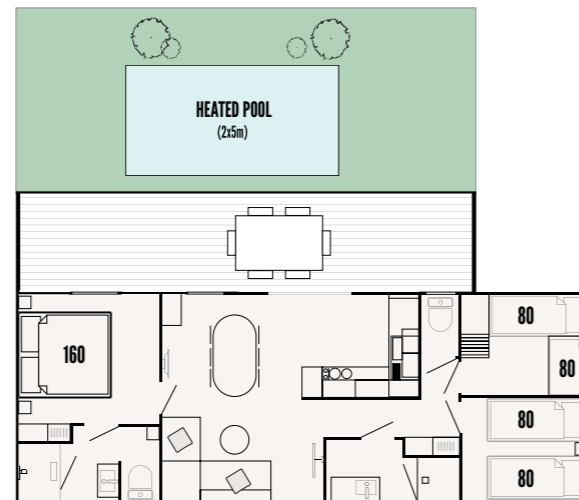


## 4 PERSONS

**CAPACITY :** 4 persons  
**ACCOMMODATION :** 2 bedrooms  
**INTERIOR SURFACE :** 33m<sup>2</sup>  
**LOCATION :** vineyard side  
**ADVANTAGE :** Private fenced garden with heated swimming pool, deckchairs, plancha and dishwasher

## 6 PERSONS

**CAPACITY :** 6 persons  
**ACCOMMODATION :** 3 bedrooms  
**INTERIOR SURFACE :** 40m<sup>2</sup>  
**LOCATION :** vineyard side  
**ADVANTAGE :** Private fenced garden with heated swimming pool, deckchairs, plancha and dishwasher



# COCO SWEET



## 4 PERSONS

CAPACITY : 4 persons (2 adults and 2 children)

ACCOMMODATION : 1 bedroom + convertible sofa

INTERIOR SURFACE : 18m<sup>2</sup>

LOCATION : vineyard side

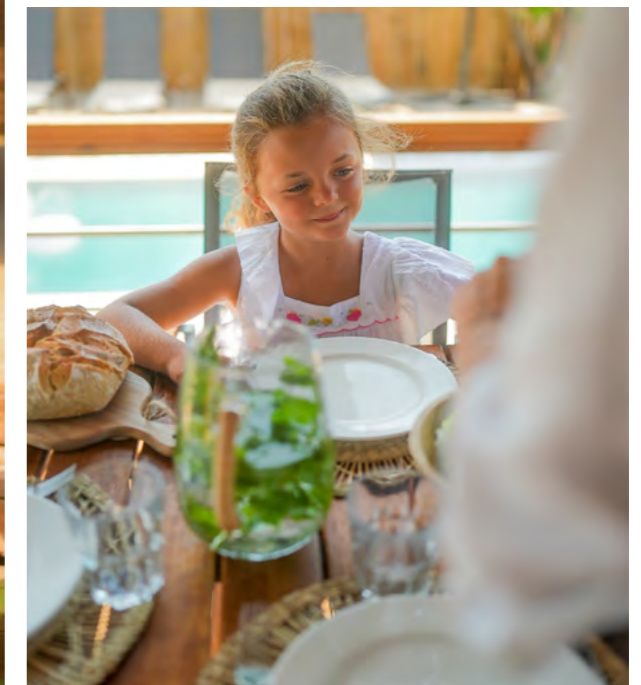
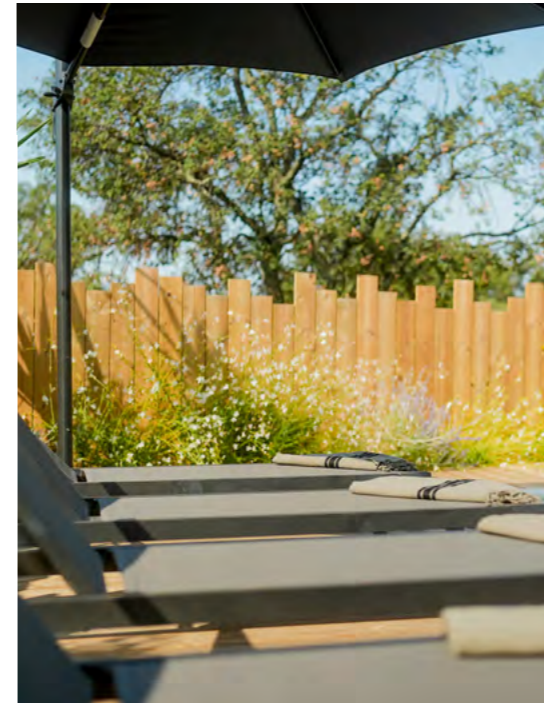
ADVANTAGE : Original accommodation



# FEATURES MOBIL-HOMES

	Coco Sweet	Prestige Piscine	Prestige Jacuzzi	Prestige	Premium Plus	Privilège	Premium	Comfort Plus
Surface area*	18m <sup>2</sup>	21 – 40m <sup>2</sup>	21 – 33m <sup>2</sup>	18 – 33m <sup>2</sup>	18 – 33m <sup>2</sup>	18 – 36,5m <sup>2</sup>	18 – 30m <sup>2</sup>	18 – 30m <sup>2</sup>
Bedrooms	1	1,2 ou 3	1,2 ou 3	1,2 ou 3	1,2 ou 3	1,2 ou 3	1,2 ou 3	1,2 ou 3
Covered terrace	•	•	•	•	•	•	•	•
1 parking space	•	•	•	•	•	•	•	•
Private garden	•	•	•	•	•	Small outdoor space	•	
Sun loungers		4	2	2	2		2 vineyard side or 4 beach side	
Garden armchair	2					2		
Outdoor gas grill		•	•	•				
Dishwasher		•	•	•	•	•		
Reversible air conditioning	•	•	•	•	•	•	•	•
TV	•	•	•	•	•	•	•	•
Chromecast		•	•	•			Beach side	
Coffee machine	Nespresso	Nespresso	Nespresso	Nespresso	Nespresso	Nespresso	Nespresso	With filters
Bed linen		•	•	•	From 3 nights	From 3 nights		
Bath linen		•						
Pool towels		•						
Wifi	Unlimited	Unlimited	Unlimited	Unlimited	Unlimited	Unlimited	Unlimited	Unlimited
End-of-stay cleaning		•	•	•	•	•	•	
1 dog accepted				If on the vineyard side	•	•	If on the vineyard side	•
Year of construction	2023	2022-2025	2022-2025	2022-2025	2019	2024	2015	2017-2019

\*The surface area of mobile homes depends on the number of bedrooms.





# RENTING A CAMPING PITCH

We offer pitches for caravans, motorhomes, or tents, located on **THE BEACH** or on **THE VINEYARD SIDE**. For maximum comfort and complete relaxation, we provide several types of pitches: Comfort, Comfort Plus, and Premium.

You will have access to our fully renovated sanitary blocks, as well as various services to make your stay easier, including motorhome drainage areas, safes, and refrigerator rentals.





# MOBILE HOME RATES

Pour connaître les tarifs des locations mobil-home, veuillez cliquer sur le bouton « **RÉSERVER** » et rentrer les dates de votre séjour.\*  
 To find out the rates for mobile home rentals, please click on « **BOOK** » and enter the dates of your stay.\*

\*Nos tarifs ne sont pas fixes et évoluent désormais en fonction du moment de votre réservation. / Our rates are not fixed and evolve according to the time of your reservation.

## TARIFS EMPLACEMENT

PITCH RATES  
 Prix par nuit (2 personnes incluses) - Prix en euros  
 Price per night (2 people included) - Prices in euros

Du - from	4 avril	1 mai	17 mai	31 mai	5 juil.	26 juil.	18 août	1 sept.	22 sept.	29 sept.
Au - to	30 avril	16 mai	30 mai	4 juil.	25 juil.	17 août	31 août	21 sept.	28 sept.	12 oct.
<b>Côté Vignes - VINEYARD SIDE</b>										
<b>Confort</b> (électricité 6A) <b>Comfort</b> (electricity 6A)	29	37	39	42	59	62	59	46	37	33
<b>Confort Plus</b> (env. 90m <sup>2</sup> , électricité 10A) <b>Comfort Plus</b> (approx. 90m <sup>2</sup> , electricity 10A)	42	50	52	55	72	77	72	56	47	43
<b>Premium</b> (env. 90m <sup>2</sup> , électricité 10A, eau) <b>Premium</b> (approx. 90m <sup>2</sup> , electricity 10A, water)	44	52	54	57	74	80	74	58	49	45
<b>Côté Plage - BEACH SIDE</b>										
<b>Confort 4ème rang</b> (électricité 6A) <b>Comfort 4th row</b> (electricity 6A)	29	37	39	42	59	62	59	46	37	33
<b>Confort rangs intermédiaires</b> (électricité 6A) / <b>Comfort middle rows</b> (electricity 6A)	44	52	54	57	74	80	74	58	49	45
<b>Confort 1er rang</b> (électricité 6A) Pas de tente / <b>Comfort first row</b> (electricity 6A) No tent	54	62	64	67	84	97	84	71	62	58

Taxe de séjour 2025 : 0.86€ par nuit par personne de + de 18 ans. / Tourist tax 2025 : 0.86€ per night per person over 18 years.  
 Le tarif de base inclut deux personnes et une installation. / The basic rate includes two people and one installation.

## SUPP EMPLACEMENT

EXTRAS FOR PITCH  
 Prix par nuit - Prix en euros  
 Price per night - Prices in euros

Du - from	4 avril	1 mai	17 mai	31 mai	5 juil.	26 juil.	18 août	1 sept.	22 sept.	29 sept.
Au - to	30 avril	16 mai	30 mai	4 juil.	25 juil.	17 août	31 août	21 sept.	28 sept.	12 oct.
<b>Bébé de - de 1 ans</b> <b>Baby - 1 year old</b>	Offert Free	Offert Free	Offert Free	Offert Free	Offert Free	Offert Free	Offert Free	Offert Free	Offert Free	Offert Free
<b>Enfant de 1 à 4 ans</b> <b>Child from 1 to 4 years old</b>	Offert Free	Offert Free	Offert Free	Offert Free	5	5	5	Offert Free	Offert Free	Offert Free
<b>Enfant de 5 à 17 ans</b> <b>Child from 5 to 17 years old</b>	7	7	7	8	8	10	8	8	7	7
<b>Adulte de + de 18 ans</b> <b>Adult + 18 years old</b>	11	11	11	11	14	14	14	11	11	11
<b>Voiture supplémentaire*</b> <b>Extra car*</b>	8	8	8	8	8	8	8	8	8	8
<b>Chien</b> <b>Dog</b>	4	4	4	4	5	5	5	4	4	4
<b>Remorque</b> <b>Trailer</b>	6	6	6	6	6	6	6	6	6	6

\*Garée sur l'emplacement ou sur le parking de l'entrée / Parked on the pitch or in the car park at the entrance of the campsite

# ENJOY A HOLIDAY IN AN EXCEPTIONAL SETTING

Ideally located, our seaside campsite offers a wide range of diverse and varied services.

During your vacation, you can enjoy our fine sandy beach, play in the waves, discover new water sports, build sandcastles with your children, or simply lie down on a deckchair or your towel for a delightful sunbath.

Bar, restaurant, grocery store, tourist advice... Take advantage of the best amenities directly on-site to make the most of your vacation. We also offer a wide selection of activities and entertainment. Sports, culture, nature, kids' clubs... Every family member will find a program that suits them.





## ACTIVITIES FOR EVERYONE!

We offer a wide range of activities for the whole family, combining relaxation and fun in an exceptional natural setting.

Cycling enthusiasts will love the bike path located right in front of the campsite, perfect for rides through the region, whether for a short outing or a more sporty adventure.

Our beach allows you to enjoy paddleboarding directly on-site, with breathtaking views of the sea and the surrounding coast. A perfect way to combine relaxation and sport in harmony with nature.

For moments of togetherness, our pétanque courts are ready for friendly matches with family or friends under the Mediterranean sun.

Children will have plenty of fun with our wooden playground, equipped with trampolines, swings, and an inflatable structure for hours of laughter and entertainment.

Every moment is an opportunity to connect, enjoy the present, and create unforgettable memories together.





## RESTAURANTS & SHOPS

### RIVA PLAGE NEW

Our beach restaurant offers Mediterranean cuisine for lunch, in an idyllic setting on our sandy beach. You can also enjoy a refreshing cocktail at our bar and relax in the sun on one of our rental mattresses

#### OPENING HOURS

Open every day from lunch to late afternoon  
Opening times vary according to the season.

### LA CABANE

Our beach snack bar, ideally located opposite Saint-Tropez, offers simple, delicious food: burgers, fresh salads, vitamin-packed smoothies and gourmet ice creams. All in a relaxed setting, with your feet in the sand, for a lunch break full of freshness and flavour.

#### OPENING HOURS

Open every day  
Variable opening times depending on the season.





## THE GROCERY

Our campsite grocery shop is the perfect place to satisfy your every need. Every morning, we offer fresh bread and delicious pastries to get your day off to a good start. You'll also find a great selection of fresh fruits and vegetables for healthy, tasty meals.

### OPENING HOURS

Open every day.  
Opening times vary according to the season.



## THE BRASSERIE

La Brasserie is a warm and friendly place where you can enjoy a delicious dinner every evening. Our menu invites you to discover dishes with a Mediterranean flavour. For pizza lovers, we offer a great selection of pizzas to eat in or take away.

### OPENING HOURS

Open every evening from 5pm.



## SWEET

Come and discover SWEET's homemade ice creams, created with quality ingredients in a wide variety of flavours to delight young and old alike. For even more sweetness, let yourself be tempted by our waffles served with delicious toppings, or a creamy milkshake, perfect for cooling off on a hot summer's day.

### OPENING HOURS

Open in high season every day from 5pm.





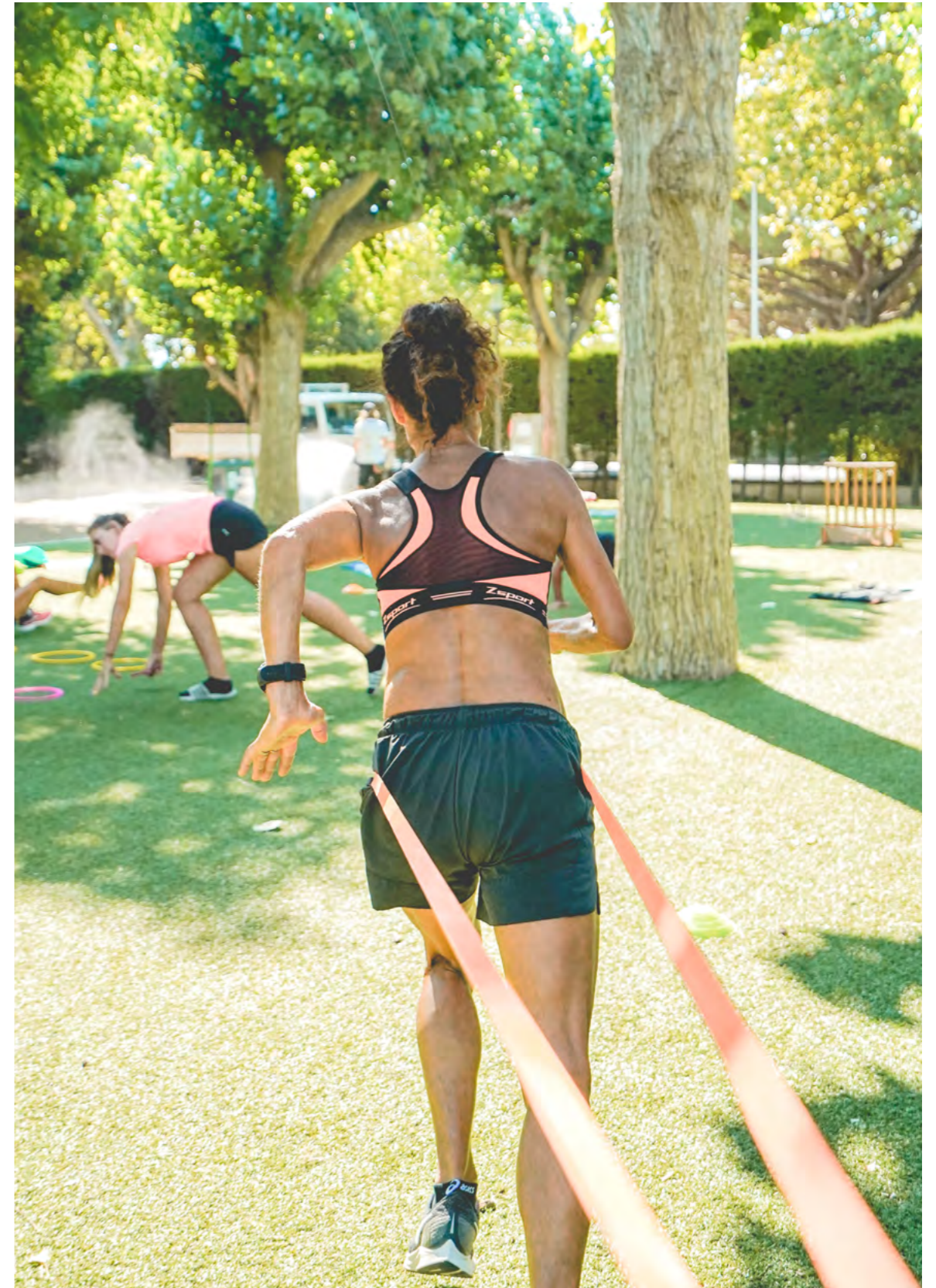
## MOVE & UNWIND

Sports enthusiasts will find everything they need with our wide range of physical activities. Our fully equipped fitness room awaits you with the latest-generation Technogym machines, treadmills, and weights for a complete and personalized workout, regardless of your level.

During high season, take advantage of group classes led by our professional coach, who will guide you through dynamic and motivating sessions to improve your physical condition while having fun.

For those who prefer exercising outdoors, we offer outdoor fitness equipment, perfect for training in nature and enjoying the fresh air while staying active.

Whether you're into strength training, cardio, or simply looking for moments of well-being, our sports area is designed to meet all your expectations.





## CHILDREN ARE KINGS!

The Kids Club at our campsite is the perfect place to entertain your children and create unforgettable memories during your stay. Open during the high season, our team of passionate activity leaders offers a wide range of activities tailored for children aged 5 to 12 years.

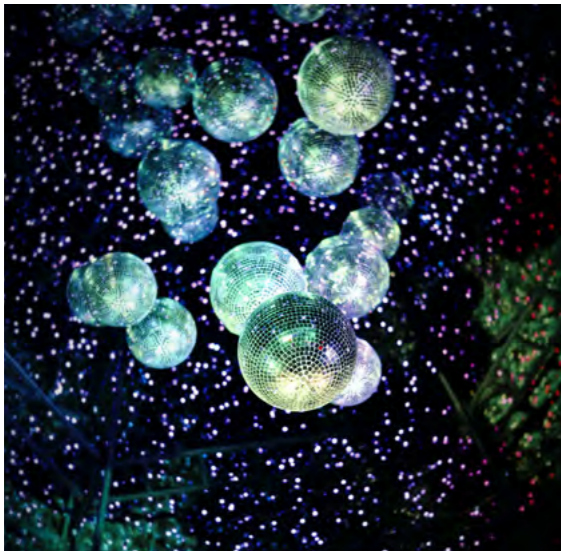
Whether outdoors, with games in the open air, team sports, or treasure hunts, or indoors, with creative workshops, board games, and hands-on activities, each day is a new adventure.

Our activity leaders ensure a fun and educational program, allowing each child to have fun, make new friends, and develop their creativity, all in a safe and caring environment.

Leave your children in the hands of the Kids Club, where they'll enjoy magical moments while you, in turn, reclaim a little freedom during your vacation!







## SHARING & CELEBRATING

Evenings during the high season are all about entertainment and togetherness! We have put together a full schedule of activities to suit all tastes, ensuring that your evenings are just as memorable as your days.

Throughout the season, enjoy live concerts at the brasserie, where local bands and artists create a festive and relaxed atmosphere. Shows for both children and adults are also on the agenda, offering a variety of entertainment for the whole family, from comedy to artistic performances.

Outdoor movie nights are a must-see event: get comfortable under the stars and let yourself be carried away by the magic of the big screen in a relaxed, family-friendly setting.

For major celebrations, such as July 14th and August 15th, we invite you to experience exceptional Beach Parties on our beach, where you can dance, have fun, and admire the fireworks with your feet in the sand.





## A TAILOR-MADE SERVICE

### ACTIVITY BOOKING

Thanks to our partnership with the Grimaud Tourist Office, you can take advantage of discounts and preferential rates on a wide range of activities by booking directly at the concierge desk.

### OPENING HOURS

Service available from June to the end of August.

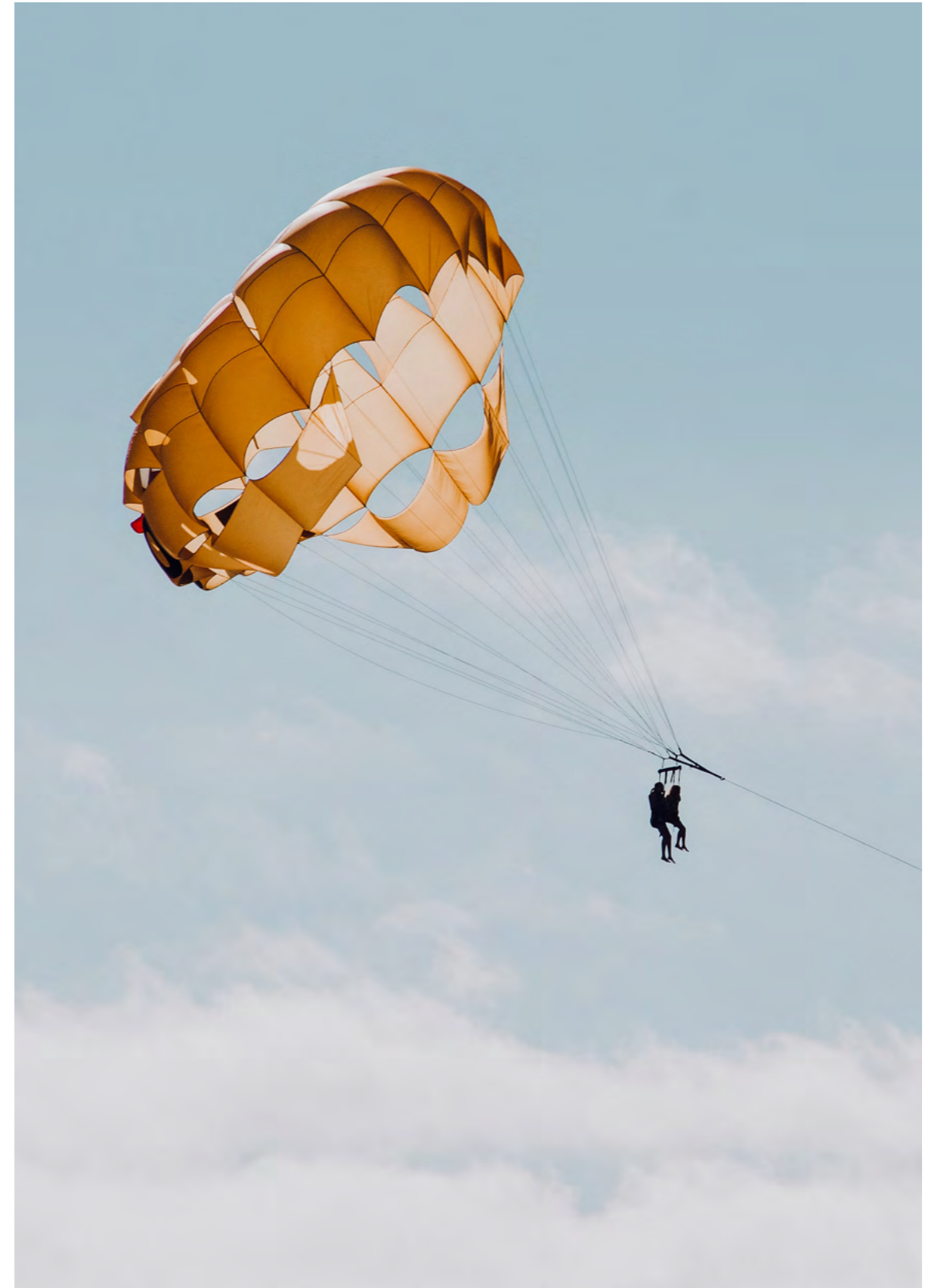
### RENTAL OF EQUIPMENT AND SPORTS GEAR

Our concierge service is there to make your stay as enjoyable as practical. We offer a selection of equipment for hire to help you get around and enjoy your holiday: classic bikes, electric bikes and paddles for exploring the crystal-clear waters from the beach, as well as scooters for exploring the surrounding area quickly and easily.

For your comfort, we have a range of equipment to suit all tastes: highchairs and baby cots, barbecues and planchas for convivial evenings, and other practical equipment to make your camping holiday easier.

### AVAILABILITY

All season, every day. Service available from 8.30am to 7.30pm.





Les Mûres, 2721 Route du littoral, 83310 Grimaud, VAR – Pitch +33 (0)4 94 56 16 97  
Mobil-home +33 (0)4 94 56 16 17 – [info@camping-des-mures.com](mailto:info@camping-des-mures.com) – [www.camping-des-mures.com](http://www.camping-des-mures.com)